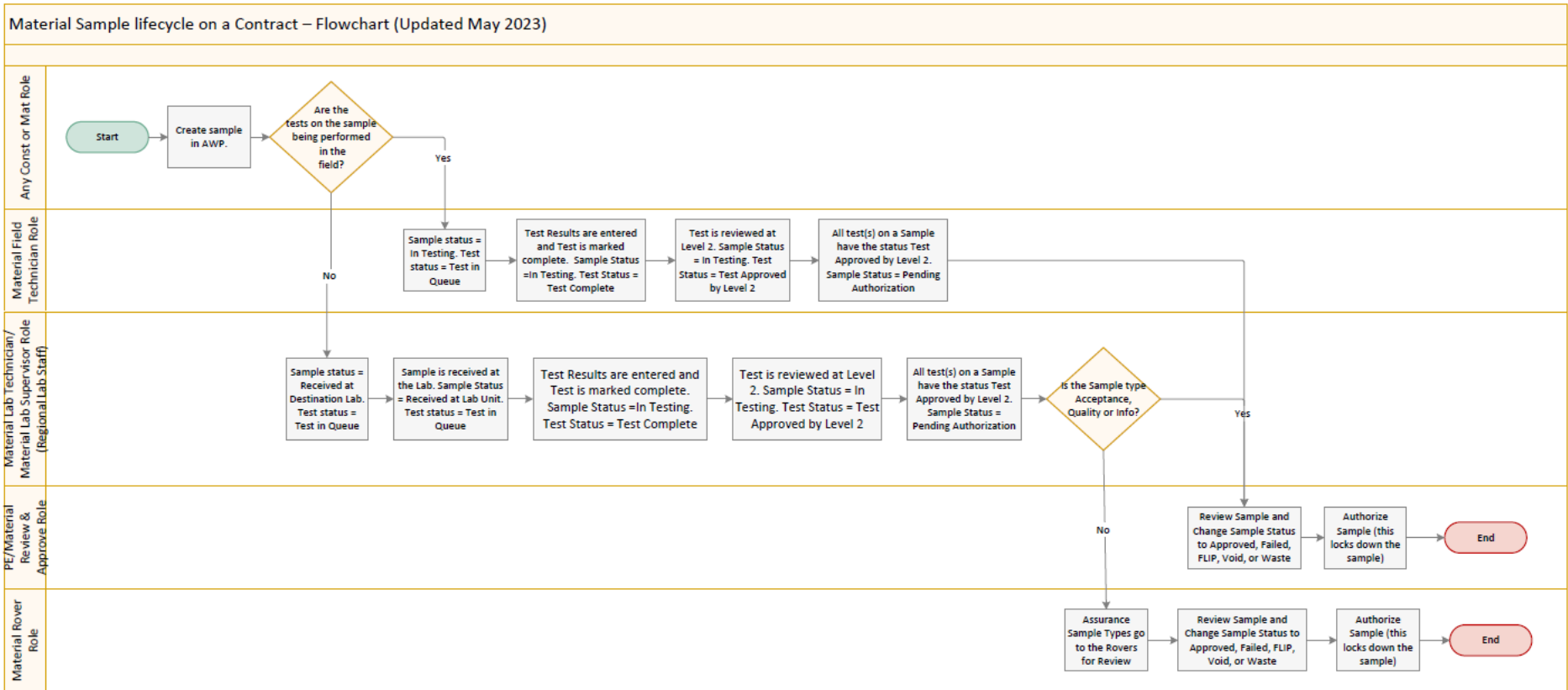




FLOWCHART:

Material Sample Lifecycle on a Contract



Notes:

- This flowchart is to outline the different sample status and test status that occur during the sample lifecycle on a Contract.
- Each swim lane is a Role in Aashtoware and outlines which role is expected to perform the action.
- In order to enter results or review tests at Level 1 or Level 2 the user must be qualified in the test method appropriate for that test.
Example: A user must have an active WAQTC Aggregate qualification to enter an ATM 304 test (Gradation).
- No testing qualification is required to review the whole sample in the Review Samples worksheet.

If you need further assistance please contact your Module Admin
Updated May 2023